

PHILIPS

Hair Dryer

3000

2100W

ThermoProtect attachment

Advanced ionic care

6 heat & speed settings



BHD360/20



Powerful drying at a lower temperature with the ThermoProtect attachment

The uniquely-designed ThermoProtect attachment powerfully mixes warm and cool air for everyday care.

Easy to use

- Precise control with 6 heat and speed settings
- Adds volume, maximizes thickness, curls and bouncy styles
- Slim nozzle for touch-ups and detailed styling

Care and protect

- Advanced ionic care for shiny, frizz-free hair
- ThermoProtect attachment

Powerful drying

- Powerful drying with 2100W
- Cool air setting to finish your style

Highlights

2100W of drying power



This 2100W hair dryer creates powerful airflow for beautiful results every day.

ThermoProtect attachment



The uniquely-designed ThermoProtect attachment powerfully mixes warm and cool air for everyday care. It drops the temperature by 15°C while still drying your hair quickly.

Advanced ionic care



This powerful ionic system generates up to 20 million ions* per drying session, intensifying your hair's shine. So you can enjoy glossy, frizz-free hair.

6 heat and speed settings



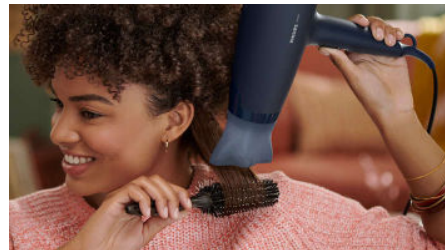
Easily pick the combination of heat and speed that works best for your hair and style. Six different settings ensure precise control for tailored styling.

Cool air setting



The cool air setting provides a burst of cold air to finish and hold your style.

14 mm styling nozzle



The slim nozzle precisely focuses the air, for quick touch-ups and perfecting small details of your style.

Volume diffuser



The volume diffuser spreads the flow of air across the hair, boosting volume and reducing frizz while drying. For best results, hold the diffuser close to the crown and root area. The diffuser's fine textured pins will add volume, maximize thickness, bounce and help shape curls.

Specifications

Attachments

Nozzle: 14 mm
ThermoProtect attachment
Volume diffuser

Technical specifications

Cord length: 1.8 m
Voltage: 220-240 V
Wattage: 2100 W
Motor: DC

Features

Storage hook
Heat/Speed settings: 6
Settings: Cool air setting

Service

2-year worldwide warranty

Caring technologies

Ionic Care
ThermoProtect

